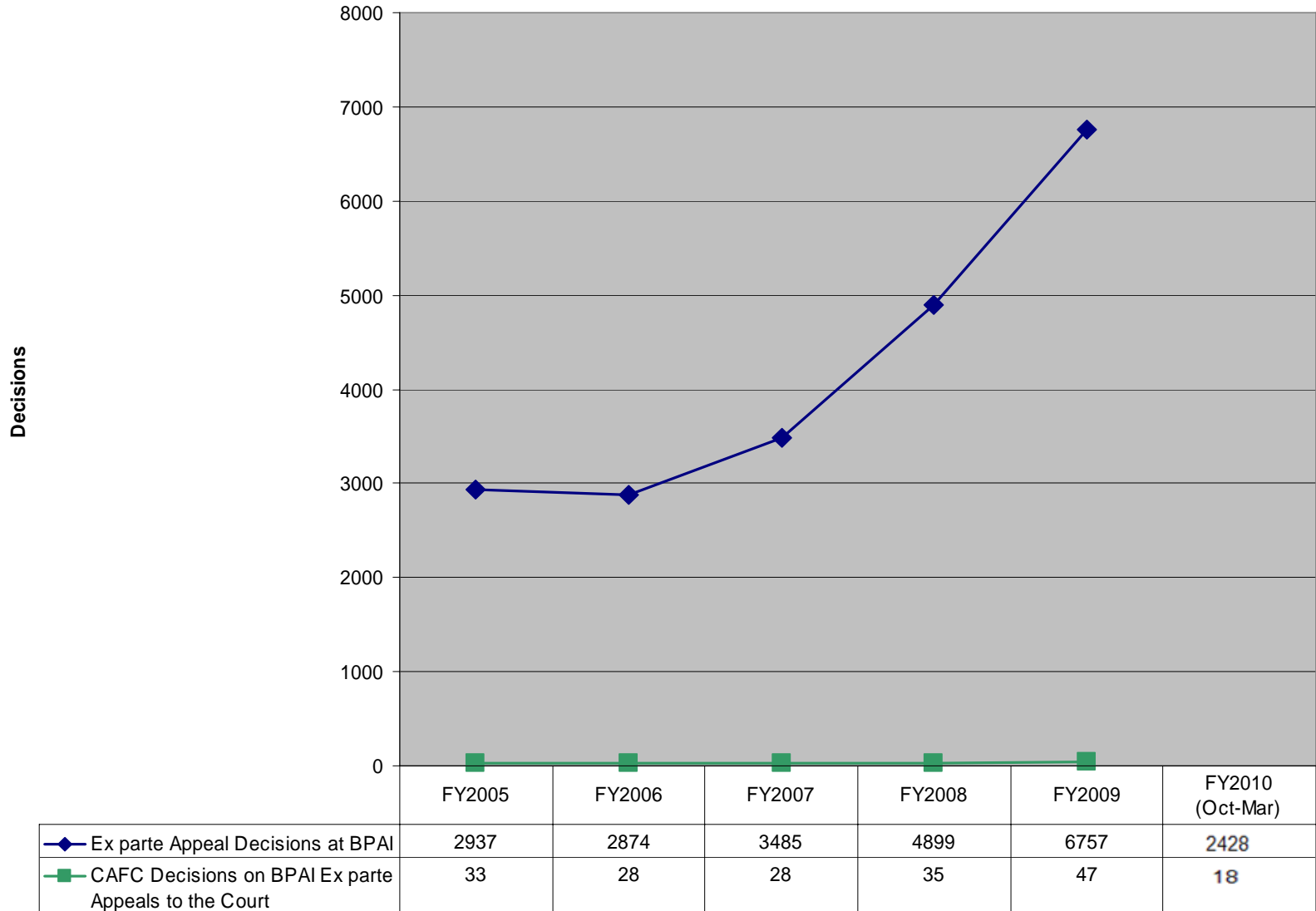
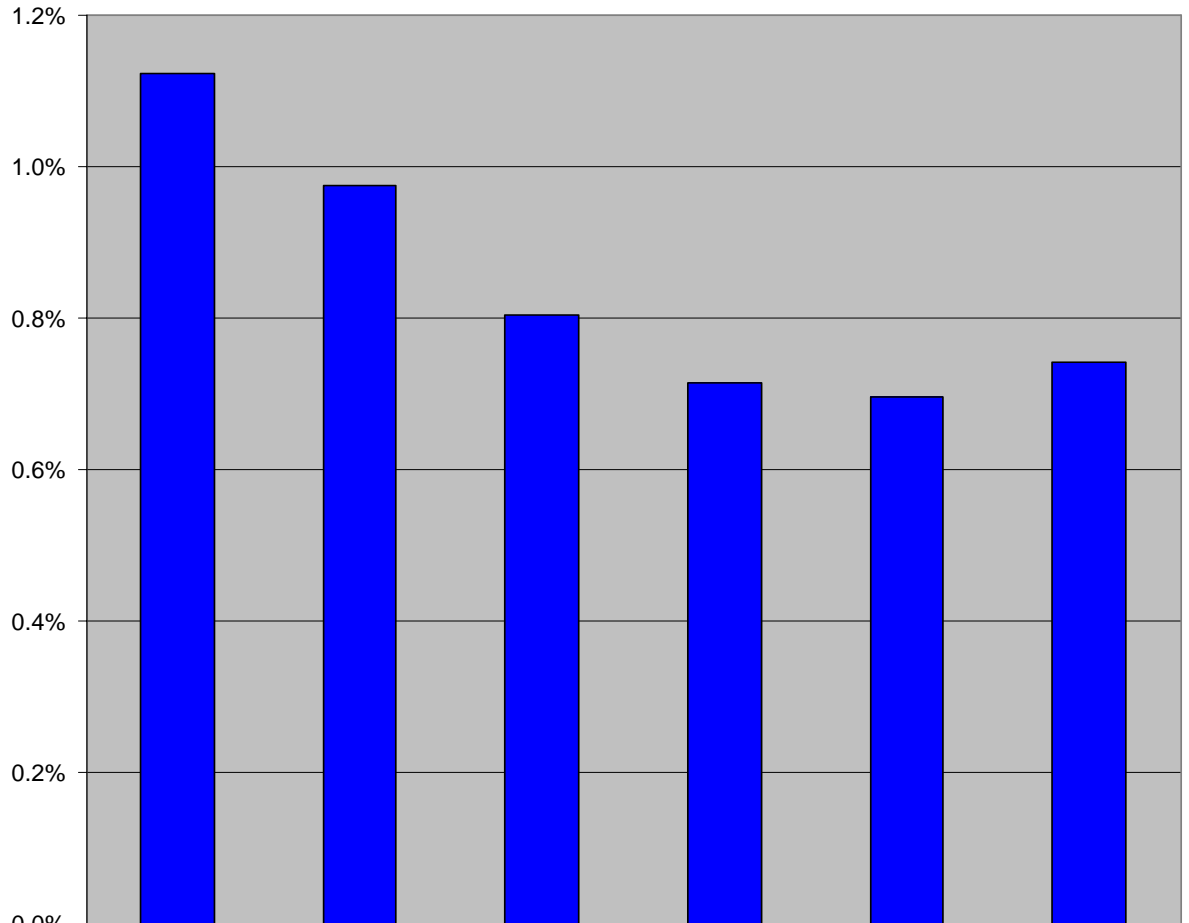


BPAI Ex parte Appeal Decisions vs. CAFC Decisions on BPAI Ex parte Appeals



CAFC Decisions on BPAI Ex parte Appeals to the Court as per-cent of Ex parte Appeal Decisions at BPAI



■ CAFC Decisions on BPAI Ex parte Appeals to the Court as per-cent of Ex parte Appeal Decisions at BPAI

	FY2005	FY2006	FY2007	FY2008	FY2009	FY2010 (Oct-Mar)
	1.1%	1.0%	0.8%	0.7%	0.7%	0.7%